



Validator



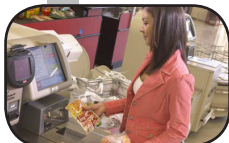
Finally, a globally Standard solution for all your Bill and Ticket Validating needs

- ▶ Improve Performance
- ▶ Increase Revenue
- ▶ Reduce Operating Costs
- ▶ Improve Profitability



Whether you are a Gaming OEM or Operator, all of the above points should be of interest to you.

Others claim it – but we have it. With the industry's first truly global standard validator solution comes reduced logistical and support costs, an overall increase in performance, reliability, and future proofing—CashCode's **one**[™] validator can reduce operational costs while increasing your revenues.



Reduce Operating Costs. No longer do operators, OEMs and users need to stock different units for different countries, currencies, protocols or electrical interfaces. The **one**[™] from CashCode handles it all.



- ▶ Flexible power option (12/24v)
- ▶ Multiple front bezels options
- ▶ Flexible interfaces options (all major industry interfaces in one board)
- ▶ Supports major industry communication protocols for any retrofit projects
- ▶ Global currency support

Improved Performance. CashCode products can handle virtually any worldwide currency. From bill widths of 62mm to 85mm. CashCode was the first to patent its unique self-centering guides. Unlike competitive products that use graduated bill paths, **one**[™] uses patented self-centering transport guides that automatically adjust to, and perfectly align bills or bar-coded coupons of different widths—even when fed at an angle. A complete cycle takes less than 3 seconds – Fastest in the industry!

Advanced Sensor Technology. Proprietary multi-color optic sensors modules scan both sides of the bill—optimizing recognition. Patented inductive sensors detect magnetic properties inherent in legitimate currency. New ultraviolet sensors detect the latest security features now being introduced on many global currencies. A patented dielectric sensor detects paper density, security threads and watermarks. More reliable optical versus mechanical cross channel anti-stringing sensors. Which leads to high acceptance of bonafide bills and higher rejection of frauds. The Result? Higher Revenues.

BlueChip[™]. Validation software updates are now quick and easy with CashCode's BlueChip[™] smart-stick memory that updates software and/or firmware in a flash.

Memory. Standard memory can handle up to 4 currencies. Memory can also be expanded. With CashCode's CCNet protocol, the more memory you add, the more worldwide currencies you can validate all on the same unit.

Drop-Proof Cassettes. **one**'s lockable-removable cassette is rugged and drop proof due to its polycarbonate/metal design. Now cash boxes can keep up with the harshest of environments.



Working with all major central banks, CashCode sensor technology ensures all world-wide currency security features are captured - improving bonafide acceptance and rejecting fraudulent bills.



Wide Range of Bezels available. All with Diagnostic LEDs



Light weight, anti-vandal cassette (metal & polycarbonate) 600 or 1,000 note capacity. Can be equipped with optional industry standard lock(s).

Features

- Superior acceptance and security
- Patented advanced sensor technology improves valid bill recognition & protects against counterfeits
- Complete transport cycle at under 3 seconds
- Multi voltage support - 12v & 24v
- Industry's first self-centering mechanism
- Lightweight, drop-proof polycarbonate/metal hybrid cash box with optional lock(s)
- Anti-stringing protection
- Four-way bill insertion
- 4-way barcode recognition and acceptance
- Tool-free, one-step easy access

Convenience for You and Your Customers

- 98% first time insertion acceptance rate
- Easy to service
- Virtually maintenance free
- Global design—one product for all countries/all currencies
- Supporting over 50 country currencies with multi-currency option

one™ specifications	
Bill Validation Rate	98% first time insertion
Bill / Ticket Insertion	4-way
Bill Width Validated	62 - 85 mm
Escrow	1 bill
Complete Transport Cycle	< 3 sec.
Cash box Capacity	600 or 1,000
Interfaces Supported	Bi-directional (RS232), serial, pulse, opto-isolated
Protocols Supported	CCNET, ID003, CashCode serial, and most other industry standard protocols supported.
Firmware Updates	USB, BlueChip™ Smart-Stick memory or downloadable
Validation Sensors	Optical, Inductive, Dielectric, Ultraviolet
Program Memory	Upgradable flash
Operating Temperature	0° C to 60° C / 32° F to 140° F
Operating Voltage	12V DC: 2.0 A or 24V DC: 1 A
Dimensions (W x H x D)	115 X 300 X 235 mm
Weight (without cassette)	3.2 kg / 7 lbs
Cassette Weight (1000, 600)	1.4 kg, 1.1 kg / 3.1 lbs, 2.4 lbs
Manufactured in	Canada
Warranty	Two years